

# DXLog

Mästarnas val

# DXLog

- Påbörjades 2008 av Kresimir (Kreso) 9A5K
- Första "riktiga" releasen Augusti 2011
- Föddes ur Kresos och ett antal ledande conteststationers frustration över Win-Test
- Klassiskt användargränssnitt, tangentbordscentriskt
- Kreso SK senvåren 2019
- Krassy K1LZ förvärvade koden och rättigheterna
- K1XM & SM7IUN åtog sig förvalta koden
  - Över 1 000 000 rader kod utan kommentarer
  - Över 3 600 rättningar/förbättringar från version 2.4.0



# DXLog idag

- Används av världens bästa contestoperatörer och superstationer
  - N6MJ, KL9A, SE5E, W9KKN, ND7K, N6WIN, TI7W, KM7W, DL1A, ZF1A, ZV2F, M6W, HQ9X, K3LR, K1LZ, LZ5R, LZ4R, UP0L, LT6M, LS5H, ZZ1M, OH5Z, SK3W, SC7DX, ...
- Unikt stöd för hårdvara: microHAM, MOAS, YCCC SO2R mini, etc.
- Mängder med ny funktionalitet
- Avancerad SO2R/2BSIQ
- >450 tester och ~100 radiomodeller
- Helt öppen design med skript, DLL och flera API
- Gratis

# WRTC

Logger	2018	2022
-----	-----	-----
N1MM+	25	26
DXLog	5	20
Win-Test	28	7
Writelog	1	3
Skookum	1	1
QARTest	0	1
TR/TR4W	3	0
sum	63	58

# Introduktion



### Operating info

Active mode

Radio 1: RUN CW  
Radio 2: S&P CW

**TX/RX status**

RADIO1 RADIO2

TX    
RX

Listening: Stereo  
RPT timer: 2.0 sec

CW speed  
36 WPM ESM 32 WPM

### Rate

All bands - All modes

Last hour: 87 Q/h  
10 Last QSO: 148 Q/h  
100 Last QSO: -- Q/h  
Since 2000z: 0 QSO

Time ON: 00:59  
Time off: 00:00

Run QSO: 42  
S&P QSO: 45  
Hour RUN QSO: 42  
Hour S&P QSO: 45

All bands - All modes

Time by mult: 0 min 52 sec  
1 qso counts: 75 pts  
1 mult counts: 162 pts  
1 mult worth: 2.1 QSO

R12 CW 32 WPM

### Radio 1

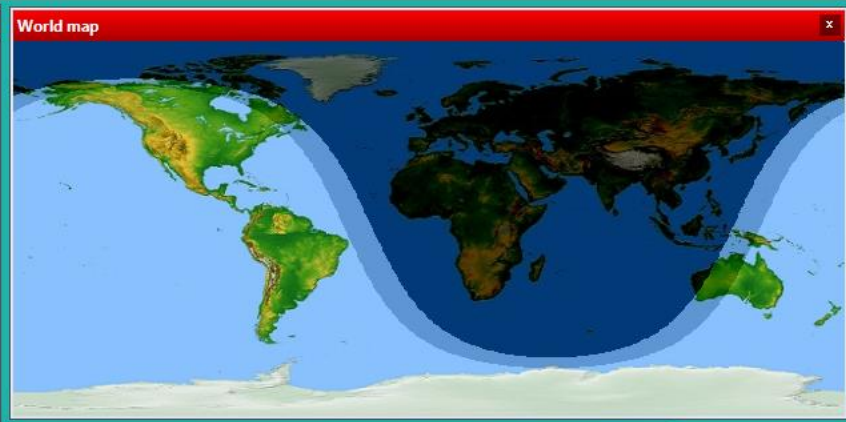
VFOA 70220

Bandmap List

### Radio 2

VFOB 70120

Bandmap List



### ACOM 700S Controller 2.4 (COM7)

Standby Operate Off

Status: RECEIVE Band: 10m Drive: 0W

0W  
0R  
22C

### Radio 1 control

REF: 0dB

PWR: 16%

WF: 7,025 - 7,040

### Summary - SM7IUN

BAND	QSO	DUP	CALLS	POINTS
160	0	0	0	0
80	13	0	7	13
40	48	1	44	48
20	22	0	21	22
15	3	0	3	3
10	0	0	0	0
<b>TOTAL</b>	<b>86</b>	<b>1</b>	<b>75</b>	<b>86</b>
<b>FINAL SCORE: 6 450</b>				

### DX cluster SM7IUN spots

### Extra information

HamQTH

QRZ

### Check partials 1

### Check partials 2

### N+11

### N+12

20:27:51 SM7IUN SR 0735z SS 1452z RUN S&P

QSO	Band	Mode	Time	Callsign	Name	ID	Mult	Stn
79	40	CW	19:56	OKSM	VIT	2499	C	R
80	40	CW	19:56	PE2K	ADI	2638	C	R
81	40	CW	19:57	SP70GP	PIOTR	3147	C	R
82	40	CW	19:57	G7BED	CHRIS	CWA	C	R
83	40	CW	19:57	M1X	STEVE	2451	C	R
84	40	CW	19:57	G4HLN	LARRY	3073	C	R
85	40	CW	19:59	DJ3TU	NORBERT	DL	C	R
86	40	CW	19:59	OZ1AAR	VILLY	2694	DUPE	R
87	40	CW	19:59	IK1YRA	CARL	2866	C	R
88	40	CW	20:27					R
88	40	CW	20:27					R



**Operating info**

Active mode

Radio 1: RUN CW  
Radio 2: S&P CW

**TX/RX status**

RADIO1 RADIO2

TX    
RX

Listening: Stereo  
RPT timer: 2.0 sec

CW speed  
36 WPM ESM 32 WPM

**Rate**

All bands - All modes  
Last hour: 87 Q/h  
10 Last QSO: 148 Q/h  
100 Last QSO: -- Q/h  
Since 2000z: 0 QSO

Time ON: 00:59  
Time off: 00:00

Run QSO: 42  
S&P QSO: 45  
Hour RUN QSO: 42  
Hour S&P QSO: 45

All bands - All modes  
Time by mult: 0 min 52 sec  
1 qso counts: 75 pts  
1 mult counts: 162 pts  
1 mult worth: 2.1 QSO

R12 CW 32 WPM

**Radio 1**

VFOA 70220

7015  
7016  
7017 → •CT1JGA  
7018  
7019 → •IK4DCX  
7020  
7021  
7022 → •OK1RR MARTIN  
7023  
7024 → •SV80VJ  
7025  
7026 → •W4PM PUCK  
7027 → •LY2PX  
7028 → •I2WIJ BOB  
7029 → •IK4DCX

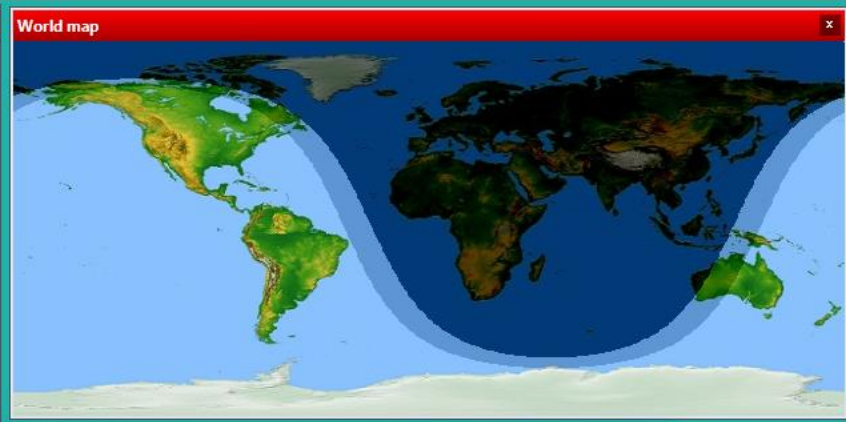
Bandmap List

**Radio 2**

VFOB 70120

7005  
7006  
7007 → •LZ7DL  
7008  
7009  
7010  
7011  
7012 → •2E0CVN  
7013  
7014  
7015  
7016  
7017 → •CT1JGA  
7018  
7019 → •IK4DCX

Bandmap List



ACOM 700S Controller 2.4 (COM7)

Standby Operate Off

Status RECEIVE Band 10m Drive 0W

0W  
OR  
22C

**Radio 1 control**

REF: 0dB

PWR: 16%

WF: 7,025 - 7,040

**Summary - SM7IUN**

BAND	QSO	DUP	CALLS	POINTS
160	0	0	0	0
80	13	0	7	13
40	48	1	44	48
20	22	0	21	22
15	3	0	3	3
10	0	0	0	0
<b>TOTAL</b>	<b>86</b>	<b>1</b>	<b>75</b>	<b>86</b>
FINAL SCORE: 6 450				

**DX cluster SM7IUN spots**

**Extra information**

HamQTH

QRZ

**Check partials 1**

**N+11**

**Check partials 2**

**N+12**

20:27:51 SM7IUN SR 0735z SS 1452z RUN S&P

QSO	Band	Mode	Time	Callsign	Name	ID	Mult	Stn
79	40	CW	19:56	OKSM	VIT	2499	C	R
80	40	CW	19:56	PE2K	ADI	2638	C	R
81	40	CW	19:57	SP70GP	PIOTR	3147	C	R
82	40	CW	19:57	G7BED	CHRIS	CWA	C	R
83	40	CW	19:57	M1X	STEVE	2451	C	R
84	40	CW	19:57	G4HLN	LARRY	3073	C	R
85	40	CW	19:59	DJ3TU	NORBERT	DL	C	R
86	40	CW	19:59	OZ1AAR	VILLY	2694	DUPE	R
87	40	CW	19:59	IK1YRA	CARL	2866	C	R
88	40	CW	20:27					R
88	40	CW	20:27					R

QSO	Band	Mode	Time	Callsign	Name	ID	Mult	Stn
79	40	CW	19:56	OK5M	VIT	2499	C	R
80	40	CW	19:56	PE2K	ADI	2638	C	R
81	40	CW	19:57	SP70GP	PIOTR	3147	C	R
82	40	CW	19:57	G7BED	CHRIS	CWA	C	R
83	40	CW	19:57	M1X	STEVE	2451		R
84	40	CW	19:57	G4HLN	LARRY	3073	C	R
85	40	CW	19:59	DJ3TU	NORBERT	DL	C	R
86	40	CW	19:59	OZ1AAR	VILLY	2694	DUPE	R
87	40	CW	19:59	IK1YRA	CARL	2866	C	R

*CQ CWT SM7IUN*

88	40	CW	07:46	SM6M	PETER	2663		R
----	----	----	-------	------	-------	------	--	---

88	40	CW	07:46					R
----	----	----	-------	--	--	--	--	---

\* NEW MULTIPLIER \*



### Operating info

Active mode

Radio 1: RUN CW  
Radio 2: S&P CW

**TX/RX status**

RADIO1 RADIO2

TX    
RX

Listening: Stereo  
RPT timer: 2.0 sec

CW speed  
36 WPM ESM 32 WPM

### Rate

All bands - All modes

Last hour: 87 Q/h  
10 Last QSO: 148 Q/h  
100 Last QSO: -- Q/h  
Since 2000z: 0 QSO

Time ON: 00:59  
Time off: 00:00

Run QSO: 42  
S&P QSO: 45  
Hour RUN QSO: 42  
Hour S&P QSO: 45

All bands - All modes

Time by mult: 0 min 52 sec  
1 qso counts: 75 pts  
1 mult counts: 162 pts  
1 mult worth: 2.1 QSO

R12 CW 32 WPM

### Radio 1

VFOA 70220

7015  
7016  
7017 > \*CT1JGA  
7018  
7019 > \*IK4DCX  
7020  
7021  
7022 > \*OK1RR MARTIN  
7023  
7024  
7025 > \*W4PM PUCK  
7026  
7027 > \*LY2PX  
7028  
7029 > \*I2WIJ BOB

Bandmap List

### Radio 2

VFOB 70120

7005  
7006  
7007  
7008  
7009 > \*LZ7DL  
7010  
7011  
7012 > \*2E0CVN  
7013  
7014  
7015  
7016  
7017 > \*CT1JGA  
7018  
7019 > \*IK4DCX

Bandmap List

### World map

### ACOM 700S Controller 2.4 (COM7)

Standby Operate Off

Status: RECEIVE Band: 10m Drive: 0W

0W  
0R  
22C

### Radio 1 control

REF: 0dB

PWR: 16%

WF: 7,025 - 7,040

### Summary - SM7IUN

BAND	QSO	DUP	CALLS	POINTS
160	0	0	0	0
80	13	0	7	13
40	48	1	44	48
20	22	0	21	22
15	3	0	3	3
10	0	0	0	0
<b>TOTAL</b>	<b>86</b>	<b>1</b>	<b>75</b>	<b>86</b>
<b>FINAL SCORE: 6 450</b>				

### DX cluster SM7IUN spots

### Extra information

HamQTH

QRZ

### Check partials 1

N+11

### Check partials 2

N+12

20:27:51 SM7IUN SR 0735z SS 1452z RUN 00P

QSO	Band	Mode	Time	Callsign	Name	ID	mult	Stn
79	40	CW	19:56	OKSM	VIT	2499	C	R
80	40	CW	19:56	PE2K	ADI	2638	C	R
81	40	CW	19:57	SP70GP	PIOTR	3147	C	R
82	40	CW	19:57	G7BED	CHRIS	CWA	C	R
83	40	CW	19:57	M1X	STEVE	2451	C	R
84	40	CW	19:57	G4HLN	LARRY	3073	C	R
85	40	CW	19:59	DJ3TU	NORBERT	DL	C	R
86	40	CW	19:59	OZ1AAR	VILLY	2694	DUPE	R
87	40	CW	19:59	IK1YRA	CARL	2866	C	R
88	40	CW	20:27					R

**Operating info**

Active mode

Radio 1: RUN CW  
Radio 2: S&P CW

**TX/RX status**

RADIO1 RADIO2

TX [ ] [ ]  
RX [ ] [ ]

Listening: Stereo  
RPT timer: 2.0 sec

CW speed  
36 WPM ESM 32 WPM

**Rate**

All bands - All modes  
Last hour: 87 Q/h  
10 last QSO: 148 Q/h  
100 last QSO: -- Q/h  
Since 2000z: 0 QSO

Time ON: 00:59  
Time off: 00:00

Run QSO: 42  
S&P QSO: 45  
Hour RUN QSO: 42  
Hour S&P QSO: 45

All bands - All modes  
Time by mult: 0 min 52 sec  
1 qso counts: 75 pts  
1 mult counts: 162 pts  
1 mult worth: 2.1 QSO

R12 CW 32 WPM

**Radio 1**

VFOA 70220

7015  
7016  
7017 → \*CT1JGA  
7018  
7019 → \*IK4DCX  
7020  
7021  
7022 → \*OK1RR MARTIN  
7023  
7024  
7025  
7026  
7027 → \*LY2PX  
7028  
7029 → \*I2WIJ BOB

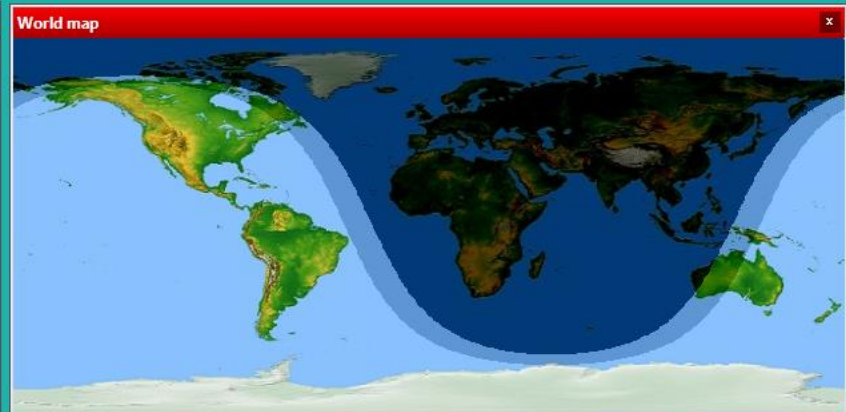
Bandmap List

**Radio 2**

VFOB 70120

7005  
7006  
7007 → \*LZ7DL  
7008  
7009  
7010  
7011  
7012 → \*2E0CVN  
7013  
7014  
7015  
7016  
7017 → \*CT1JGA  
7018  
7019 → \*IK4DCX

Bandmap List



ACOM 700S Controller 2.4 (COM7)

Standby Operate Off

Status: RECEIVE Band: 10m Drive: 0W

0W  
OR  
22C

**Radio 1 control**

REF: 0dB

PWR: 16%

WF: 7,025 - 7,040

**Check partials 1**

**N+11**

**Check partials 2**

**N+12**

20:27:51 SM7IUN SR 0735z SS 1452z RUN S&P

QSO	Band	Mode	Time	Callign	Name	ID	Mult	Stn
79	40	CW	19:56	OKSH	VIT	2499	C	R
80	40	CW	19:56	PE2K	ADI	2638	C	R
81	40	CW	19:57	SP70GP	PIOTR	3147	C	R
82	40	CW	19:57	G7BED	CHRIS	CWA	C	R
83	40	CW	19:57	M1X	STEVE	2451	C	R
84	40	CW	19:57	G4HLN	LARRY	3073	C	R
85	40	CW	19:59	DJ3TU	NORBERT	DL	C	R
86	40	CW	19:59	OZ1AAR	VILLY	2694	DUPE	R
87	40	CW	19:59	IK1YRA	CARL	2866	C	R
88	40	CW	20:27					R
88	40	CW	20:27					R

**Summary - SM7IUN**

BAND	QSO	DUP	CALLS	POINTS
160	0	0	0	0
80	13	0	7	13
40	48	1	44	48
20	22	0	21	22
15	3	0	3	3
10	0	0	0	0
TOTAL	86	1	75	86
FINAL SCORE: 6 450				

**DX cluster SM7IUN spots**

**Extra information**

HamQTH

QRZ



**Operating info**

Active mode

Radio 1: RUN CW  
Radio 2: S&P CW

**TX/RX status**

RADIO1 RADIO2

TX [ ] [ ]  
RX [ ] [ ]

Listening: Stereo  
RPT timer: 2.0 sec

CW speed  
36 WPM ESM 32 WPM

**Rate**

All bands - All modes  
Last hour: 87 Q/h  
10 last QSO: 148 Q/h  
100 last QSO: -- Q/h  
Since 2000z: 0 QSO

Time ON: 00:59  
Time off: 00:00

Run QSO: 42  
S&P QSO: 45  
Hour RUN QSO: 42  
Hour S&P QSO: 45

All bands - All modes  
Time by mult: 0 min 52 sec  
1 qso counts: 75 pts  
1 mult counts: 162 pts  
1 mult worth: 2.1 QSO

R12 CW 32 WPM

**Radio 1**

VFOA 70220

7015  
7016  
7017 > \*CT1JGA  
7018  
7019 > \*IK4DCX  
7020  
7021  
7022 > \*OK1RR MARTIN  
7023  
7024  
7025  
7026 > \*W4PM PUCK  
7027 > \*LY2PX  
7028  
7029 > \*I2WIJ BOB

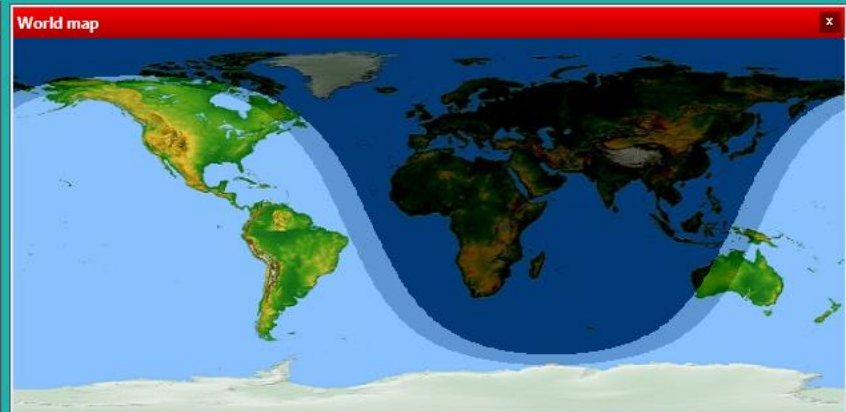
Bandmap List

**Radio 2**

VFOB 70120

7005  
7006  
7007 > \*LZ7DL  
7008  
7009  
7010  
7011  
7012 > \*2E0CVN  
7013  
7014  
7015  
7016  
7017 > \*CT1JGA  
7018  
7019 > \*IK4DCX

Bandmap List



ACOM 700S Controller 2.4 (COM7)

Standby Operate Off

Status RECEIVE Band 10m Drive 0W

0W  
0R  
22C

**Radio 1 control**

REF: 0dB  
PWR: 16%

WF: 7,025 - 7,040

**Summary - SM7IUN**

BAND	QSO	DUP	CALLS	POINTS
160	0	0	0	0
80	13	0	7	13
40	48	1	44	48
20	22	0	21	22
15	3	0	3	3
10	0	0	0	0
<b>TOTAL</b>	<b>86</b>	<b>1</b>	<b>75</b>	<b>86</b>
FINAL SCORE: 6 450				

**DX cluster SM7IUN spots**

**Extra information**

HamQTH  
QRZ

**Check partials 1**

**N+11**

**Check partials 2**

**N+12**

QSO	Band	Mode	Time	Callsign	Name	ID	Mult	Stn
79	40	CW	19:56	OKSM	VIT	2499	C	R
80	40	CW	19:56	PE2K	ADI	2638	C	R
81	40	CW	19:57	SP70GP	PIOTR	3147	C	R
82	40	CW	19:57	G7BED	CHRIS	CWA	C	R
83	40	CW	19:57	M1X	STEVE	2451	C	R
84	40	CW	19:57	G4HLN	LARRY	3073	C	R
85	40	CW	19:59	DJ3TU	NORBERT	DL	C	R
86	40	CW	19:59	OZ1AAR	VILLY	2694	DUPE	R
87	40	CW	19:59	IK1YRA	CARL	2866	C	R
88	40	CW	20:27					R
88	40	CW	20:27					R

Check partials [+40] x

SM6CHN (ANDY,176)	SM6F (LARS,173)
SM6A	SM6BDW
SM6BGA (HANS,456)	SM6BWD
SM6BZV	SM6C
SM6CMU (INGEMAR,SM)	SM6CPY

N+1 x

SM6F	SM6A	SM6C	SM6I	SM6M	SM6Q	SM6S
SM6X	SM6Y					

07:53:31 SM7IUN SR 0735z SS 1453z S&P S&P

QSO	Band	Mode	Time	Callsign	Name	ID	Mult	Stn
79	40	CW	19:56	OK5M	VIT	2499	C	R
80	40	CW	19:56	PE2K	ADI	2638	C	R
81	40	CW	19:57	SP70GP	PIOTR	3147	C	R
82	40	CW	19:57	G7BED	CHRIS	CWA	C	R
83	40	CW	19:57	M1X	STEVE	2451		R
84	40	CW	19:57	G4HLN	LARRY	3073	C	R
85	40	CW	19:59	DJ3TU	NORBERT	DL	C	R
86	40	CW	19:59	OZ1AAR	VILLY	2694	DUPE	R
87	40	CW	19:59	IK1YRA	CARL	2866	C	R

*CQ CWT SM7IUN*

88	40	CW	07:53	SM6				R
----	----	----	-------	-----	--	--	--	---

88	40	CW	07:53					R
----	----	----	-------	--	--	--	--	---

**Operating info**

Active mode

Radio 1: RUN CW  
Radio 2: S&P CW

**TX/RX status**

RADIO1 RADIO2

TX

RX

Listening: Stereo  
RPT timer: 2.0 sec

CW speed

36 WPM ESM 32 WPM

**Rate**

All bands - All modes

Last hour: 87 Q/h  
10 Last QSO: 148 Q/h  
100 Last QSO: -- Q/h  
Since 2000z: 0 QSO

Time ON: 00:59  
Time off: 00:00

Run QSO: 42  
S&P QSO: 45  
Hour RUN QSO: 42  
Hour S&P QSO: 45

All bands - All modes

Time by mult: 0 min 52 sec  
1 qso counts: 75 pts  
1 mult counts: 162 pts  
1 mult worth: 2.1 QSO

R12 CW 32 WPM

**Radio 1**

VFOA 70220

Bandmap List

**Radio 2**

VFOB 70120

Bandmap List

**World map**

ACOM 700S Controller 2.4 (COM7)

Standby Operate Off

Status: RECEIVE Band: 10m Drive: 0W

0W  
0R  
22C

**Radio 1 control**

REF: 0dB

PWR: 16%

WF: 7,025 - 7,040

**Summary - SM7IUN**

BAND	QSO	DUP	CALLS	POINTS
160	0	0	0	0
80	13	0	7	13
40	48	1	44	48
20	22	0	21	22
15	3	0	3	3
10	0	0	0	0
<b>TOTAL</b>	<b>86</b>	<b>1</b>	<b>75</b>	<b>86</b>
<b>FINAL SCORE: 6 450</b>				

**DX cluster SM7IUN spots**

**Extra information**

HamQTH

QRZ

**Check partials 1**

**N+11**

**Check partials 2**

**N+12**

20:27:51 SM7IUN SR 0735z SS 1452z RUN S&P

QSO	Band	Mode	Time	Callsign	Name	ID	Mult	Stn
79	40	CW	19:56	OKSM	VIT	2499	C	R
80	40	CW	19:56	PE2K	ADI	2638	C	R
81	40	CW	19:57	SP70GP	PIOTR	3147	C	R
82	40	CW	19:57	G7BED	CHRIS	CWA	C	R
83	40	CW	19:57	M1X	STEVE	2451	C	R
84	40	CW	19:57	G4HLN	LARRY	3073	C	R
85	40	CW	19:59	DJ3TU	NORBERT	DL	C	R
86	40	CW	19:59	OZ1AAR	VILLY	2694	DUPE	R
87	40	CW	19:59	IK1YRA	CARL	2866	C	R
88	40	CW	20:27					R
88	40	CW	20:27					R



**Operating info**

Active mode

Radio 1: RUN CW  
Radio 2: S&P CW

**TX/RX status**

RADIO1 RADIO2

TX    
RX

Listening: Stereo  
RPT timer: 2.0 sec

CW speed  
36 WPM ESM 32 WPM

**Rate**

All bands - All modes  
Last hour: 87 Q/h  
10 Last QSO: 148 Q/h  
100 Last QSO: -- Q/h  
Since 2000z: 0 QSO

Time ON: 00:59  
Time off: 00:00

Run QSO: 42  
S&P QSO: 45  
Hour RUN QSO: 42  
Hour S&P QSO: 45

All bands - All modes  
Time by mult: 0 min 52 sec  
1 qso counts: 75 pts  
1 mult counts: 162 pts  
1 mult worth: 2.1 QSO

R12 CW 32 WPM

**Radio 1**

VFOA 70220

7015  
7016  
7017 > \*CT1JGA  
7018  
7019 > \*IK4DCX  
7020  
7021  
7022 > \*OK1RR MARTIN  
7023  
7024  
7025  
7026 > \*W4PM PUCK  
7027 > \*LY2PX  
7028  
7029 > \*I2WIJ BOB

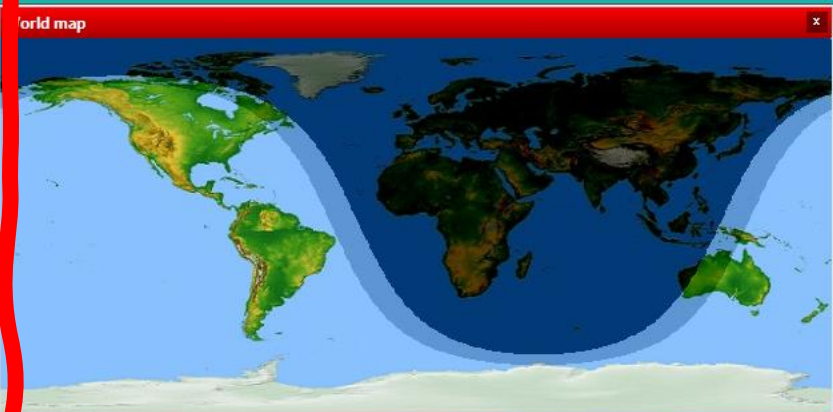
Bandmap List

**Radio 2**

VFOB 70120

7005  
7006  
7007  
7008  
7009 > \*LZ7DL  
7010  
7011  
7012 > \*2E0CVN  
7013  
7014  
7015  
7016  
7017 > \*CT1JGA  
7018  
7019 > \*IK4DCX

Bandmap List



ACOM 700S Controller 2.4 (COM7)

Standby Operate Off

Status RECEIVE Band 10m Drive 0W

0W  
0R  
22C

**Radio 1 control**

EF: 0dB  
WR: 16%  
WF: 7,025 - 7,040

**Summary - SM7IUN**

BAND	QSO	DUP	CALLS	POINTS
160	0	0	0	0
80	13	0	7	13
40	48	1	44	48
20	22	0	21	22
15	3	0	3	3
10	0	0	0	0
<b>TOTAL</b>	<b>86</b>	<b>1</b>	<b>75</b>	<b>86</b>
<b>FINAL SCORE: 6 450</b>				

**DX cluster SM7IUN spots**

**Extra information**

amQTH  
RZ

20:27:51 SM7IUN SR 0735z SS 1452z RUN S&P

QSO	Band	Mode	Time	Callsign	Name	ID	Mult	Stn
79	40	CW	19:56	OKSM	VIT	2499	C	R
80	40	CW	19:56	PE2K	ADI	2638	C	R
81	40	CW	19:57	SP70GP	PIOTR	3147	C	R
82	40	CW	19:57	G7BED	CHRIS	CWA	C	R
83	40	CW	19:57	M1X	STEVE	2451	C	R
84	40	CW	19:57	G4HLN	LARRY	3073	C	R
85	40	CW	19:59	DJ3TU	NORBERT	DL	C	R
86	40	CW	19:59	OZ1AAR	VILLY	2694	DUPE	R
87	40	CW	19:59	IK1YRA	CARL	2866	C	R
88	40	CW	20:27					R
88	40	CW	20:27					R

Radio 1 x

VFOA 70 120

7007

7008 } • JF3RTZ  
          } • PY2UDB  
          } • JK1RGL/1

7009 } • F6IIV  
          } • K1IM  
          } • JF3ELH

7010

7011 } • S58MU MILAN  
          } • HL5JZ  
          } • JR6KBF/6

7012 } • DM7AA  
          } • JJ1XNF  
          } • E74A  
          } • JK2BAP

7013 } • JE3JAF/3  
          } • SP9GMI

7014 } • SP2EAP  
          } • S53F  
          } • JE6DND

7015 } • E77EA DRAGAN  
          } • KA7FNQ  
          } • JR3KQJ

7016 } • JA6BFD/6

7017 } • JH6WXF

1 min <LB9KJ-#>  
CW 5 dB 28 WPM CQ

Bandmap List

Radio 1 x

VFOA 140300

- 14014.0 • A075CLAO EU
- 14014.0 • MH5CL EU
- 14014.0 • ON3FC EU
- 14019.5 • UA9XX EU
- 14021.1 • HA0VI EU
- 14022.0 • UY1IF EU
- 14024.8 • IZ2FME EUM
- 14027.3 • PD4HJB EU
- 14028.0 • SP3PWL EUC
- 14029.9 • I1YRL EU
- 14030.0 • DH7AMF EU
- 14030.9 • UB1ATB EU
- 14033.0 • UK8ZC AS
- 14033.0 • UK8MUR AS
- 14035.6 • UA3DJR EU
- 14036.0 • N1XI NA
- 14040.0 • EA4DKJ EU
- 14040.5 • N90UL NA
- 14040.5 • W1AW  
New QSO  
4 min <N9CO-#>  
140 CW 31 dB 17 WPM CQ CT
- 14054.0 • NA1CN NA
- 14055.0 • IK1YFE EU
- 14056.0 • K50HY NA
- 14057.5 • DL2GWZ EU
- 14058.0 • N5FZ NA
- 14060.0 • AA7EE NA
- 14060.2 • F6IFG EU
- 14063.7 • KJ4VTM NA

2 min <OZ1BZS-#>  
CW 5 dB 26 WPM CQ

Bandmap List

DX cluster announcements x

	160	80	40	20	15	10	Current
Mults	2	21	70	38	16	18	
Qsos	2	21	70	38	16	18	
Total Qsos	2	21	71	38	16	18	

- › 7001.5 DS1TUW/P 0745z <BH4RXP-#>
- › 7003.2 JA3MRF 0747z <JH7CSU-...>
- › 7004.0 JH3IJF 0743z <7N4XCV-#>
- › 7004.0 ZL3XDJ 0746z <DL8LAS-#>
- › 7006.0 HL5JAC 0747z <BG4WOM-#>
- › 7006.1 6K5ZMN 0746z <BH4RRG-#>
- › 7007.5 JI20JV 0748z <7N4XCV-#>
- › 7008.0 JF3RTZ 0748z <7N4XCV-#>
- › 7008.0 PY2UDB 0746z <G4IRN-#>
- › 7008.5 JK1RGL/1 0746z <JN1ILK-#>
- › 7008.8 JE8NTJ 0748z <7N4XCV-#>
- 7009.0 F6IIV 0743z <SM7IUN-#>
- › 7009.0 K1IM 0746z <F6IIV>

**Operating info**

Active mode

Radio 1: RUN CW  
Radio 2: S&P CW

**TX/RX status**

RADIO1 RADIO2

TX    
RX

Listening: Stereo  
RPT timer: 2.0 sec

CW speed  
36 WPM ESM 32 WPM

**Rate**

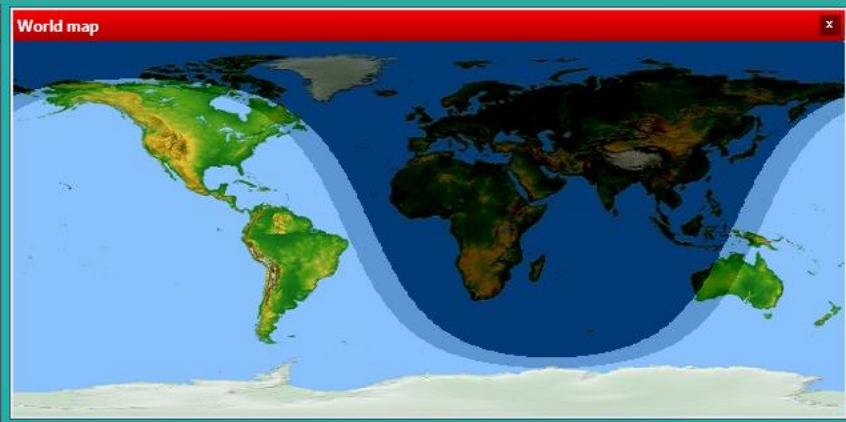
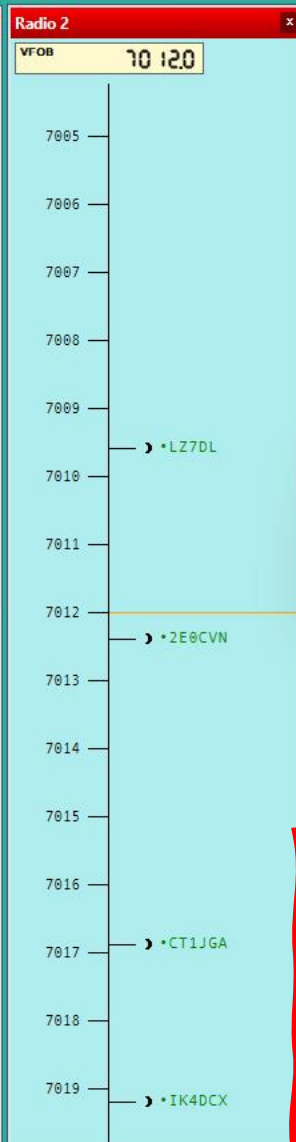
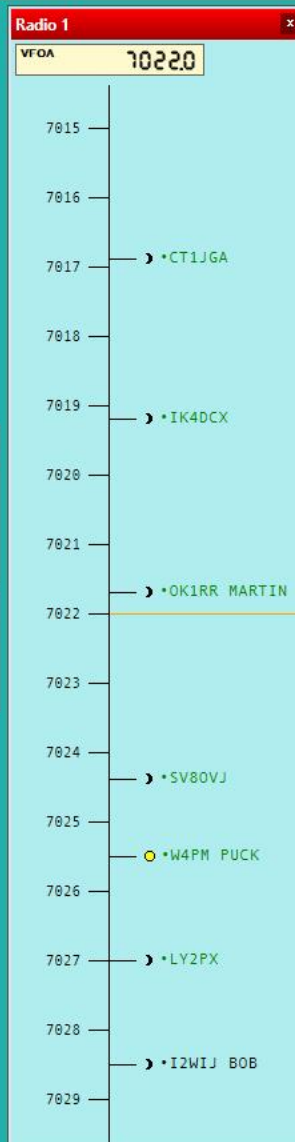
All bands - All modes  
Last hour: 87 Q/h  
10 Last QSO: 148 Q/h  
100 Last QSO: -- Q/h  
Since 2000z: 0 QSO

Time ON: 00:59  
Time off: 00:00

Run QSO: 42  
S&P QSO: 45  
Hour RUN QSO: 42  
Hour S&P QSO: 45

All bands - All modes  
Time by mult: 0 min 52 sec  
1 qso counts: 75 pts  
1 mult counts: 162 pts  
1 mult worth: 2.1 QSO

R12 CW 32 WPM



ACOM 700S Controller 2.4 (COM7)

Standby Operate Off

Status: RECEIVE Band: 10m Drive: 0W

0W  
0R  
22C

**Radio 1 control**

REF: 0dB

PWR: 16%

WF: 7,025 - 7,040

**Check partials 1**

**Check partials 2**

**N+11**

**N+12**

20:27:51 SM7IUN SR 0735z SS 1452z RUN S&P

QSO	Band	Mode	Time	Callsign	Name	ID	Mult	Stn
79	40	CW	19:56	OKSM	VIT	2499	C	R
80	40	CW	19:56	PE2K	ADI	2638	C	R
81	40	CW	19:57	SP70GP	PIOTR	3147	C	R
82	40	CW	19:57	G7BED	CHRIS	CWA	C	R
83	40	CW	19:57	M1X	STEVE	2451	C	R
84	40	CW	19:57	G4HLN	LARRY	3073	C	R
85	40	CW	19:59	DJ3TU	NORBERT	DL	C	R
86	40	CW	19:59	OZ1AAR	VILLY	2694	DUPE	R
87	40	CW	19:59	IK1YRA	CARL	2866	C	R
88	40	CW	20:27					R
88	40	CW	20:27					R

**Summary - SM7IUN**

BAND	QSO	DUP	CALLS	POINTS
160	0	0	0	0
80	13	0	7	13
40	48	1	44	48
20	22	0	21	22
15	3	0	3	3
10	0	0	0	0
TOTAL	86	1	75	86
FINAL SCORE: 6 450				

**DX cluster SM7IUN spots**

HamQTH

QRZ

## Summary - HQ9X



BAND	QSO	DXCC	ZONE	DUPE	POINTS	AVG
160	292	30	15	7	611	2.1
80	798	75	20	23	1800	2.3
40	2053	98	29	55	4939	2.4
20	2283	112	35	72	5484	2.4
15	2755	120	36	67	6818	2.5
10	2210	99	30	66	5265	2.4
TOTAL	10391	534	165	290	24917	2.4

FINAL SCORE:17 416 983

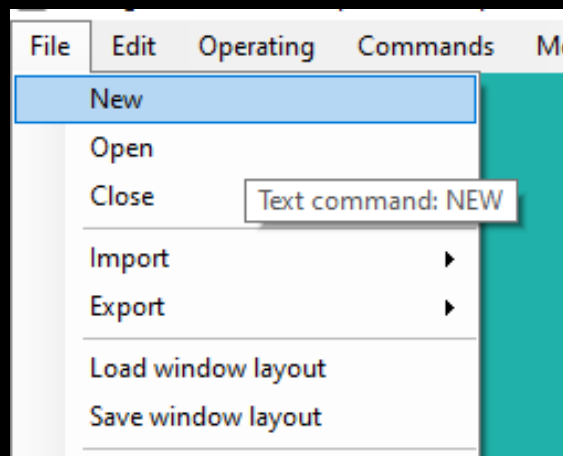


# Komma igång





# Skapa en logg



```
9 160 CW 13:41 EA4HH 599 599  
10 160 CW 13:41 SE5E 599 599 INGO  
  
11 160 CW 13:42 NEW 599 599
```

A screenshot of the 'Contest configuration' dialog box. The dialog is divided into three sections: Station, Contact, and Contest.

**Station**

- Callsign: HQ9X
- Grid square: EK66RH
- Exchange: [empty]
- DXCC prefix: HR
- CQ/WAZ zone: 7
- ITU zone: 11
- State/Province/Other: DX

**Contact**

- Name: Rudy Bakalov
- Address: 18 Fillow Street
- Address: [empty]
- City: Westport
- State: CT
- Zip: 06880
- Country: USA
- Email: rbakalov@yahoo.com
- Club: Yankee Clipper Contest Club
- Request certificate

**Contest**

- Contest: CQ World Wide
- Category: Multi-operator, two transmitters
- Station: Fixed
- Mode: CW
- Overlay: ---
- Operator name: [empty]
- Class: High
- Power: 1000
- Operators: K1XM SM7IUN W1UE K1TR

Buttons: OK, Cancel

S01R

60	80	CW	16:38	AD81		599	599	05	3	R1
<i>LA8PV 5NN 14</i>										
61	80	CW	16:39	LA8PV		599	599	14	0	R
<b>MULT NEEDED: 160,40,20,15,10</b>										

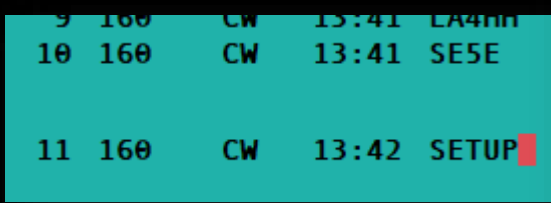
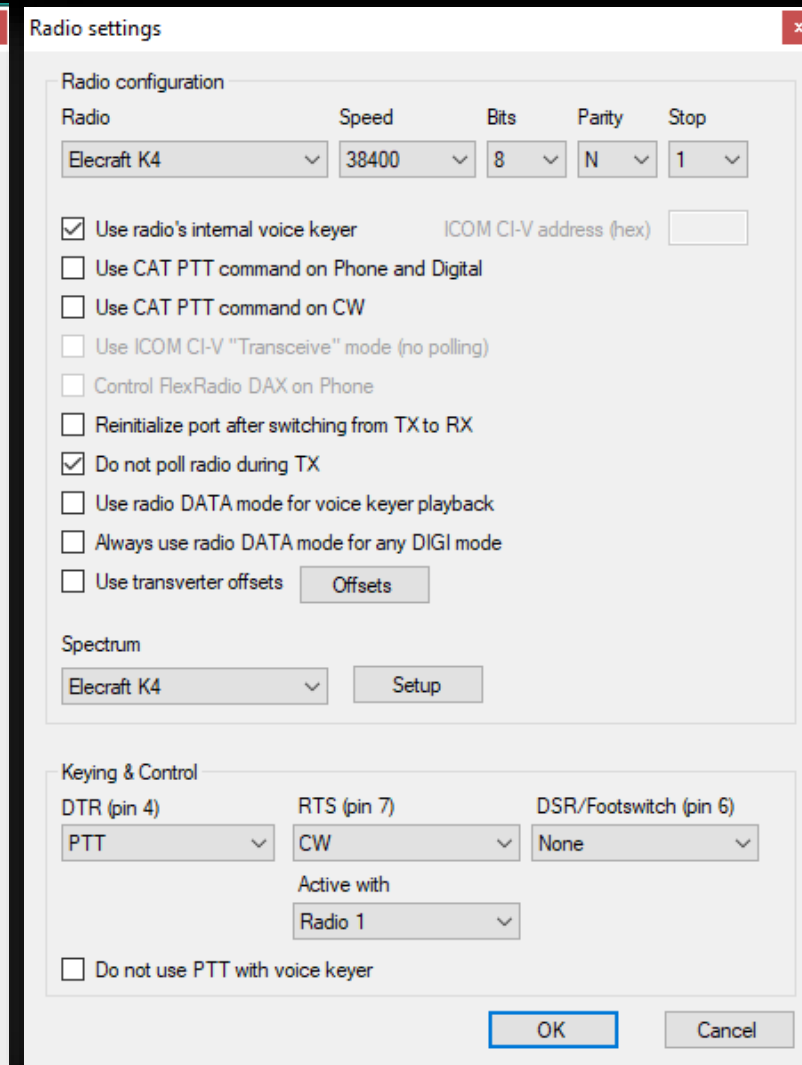
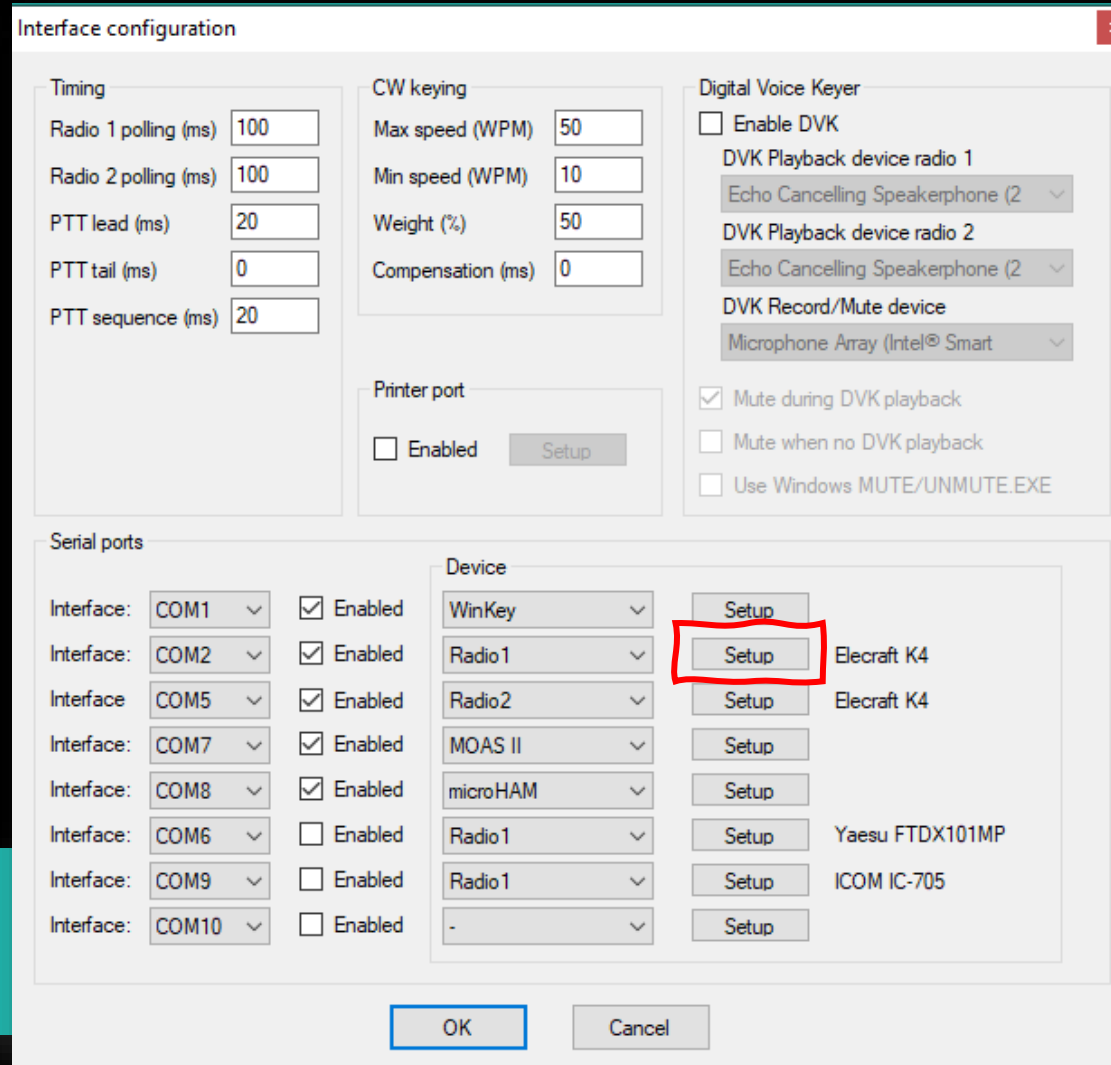
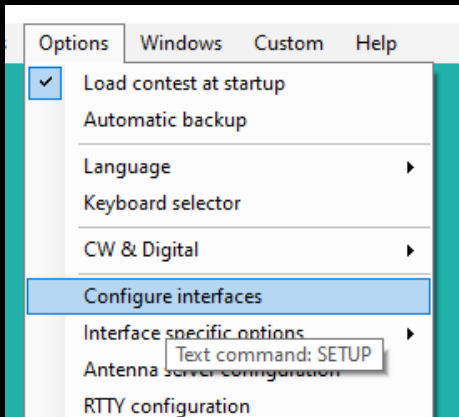
S02V

60	80	CW	16:38	AD81		599	599	05	3	R
<i>LA8PV 5NN 14</i>										
61	80	CW	16:40	LA8PV		599	599	14	0	R
<i>LZ5R 5NN 14</i>										
61	80	CW	16:40	LZ5R		599	599	15	0	R
<b>MULT NEEDED: 160,40,20,15,10</b>										

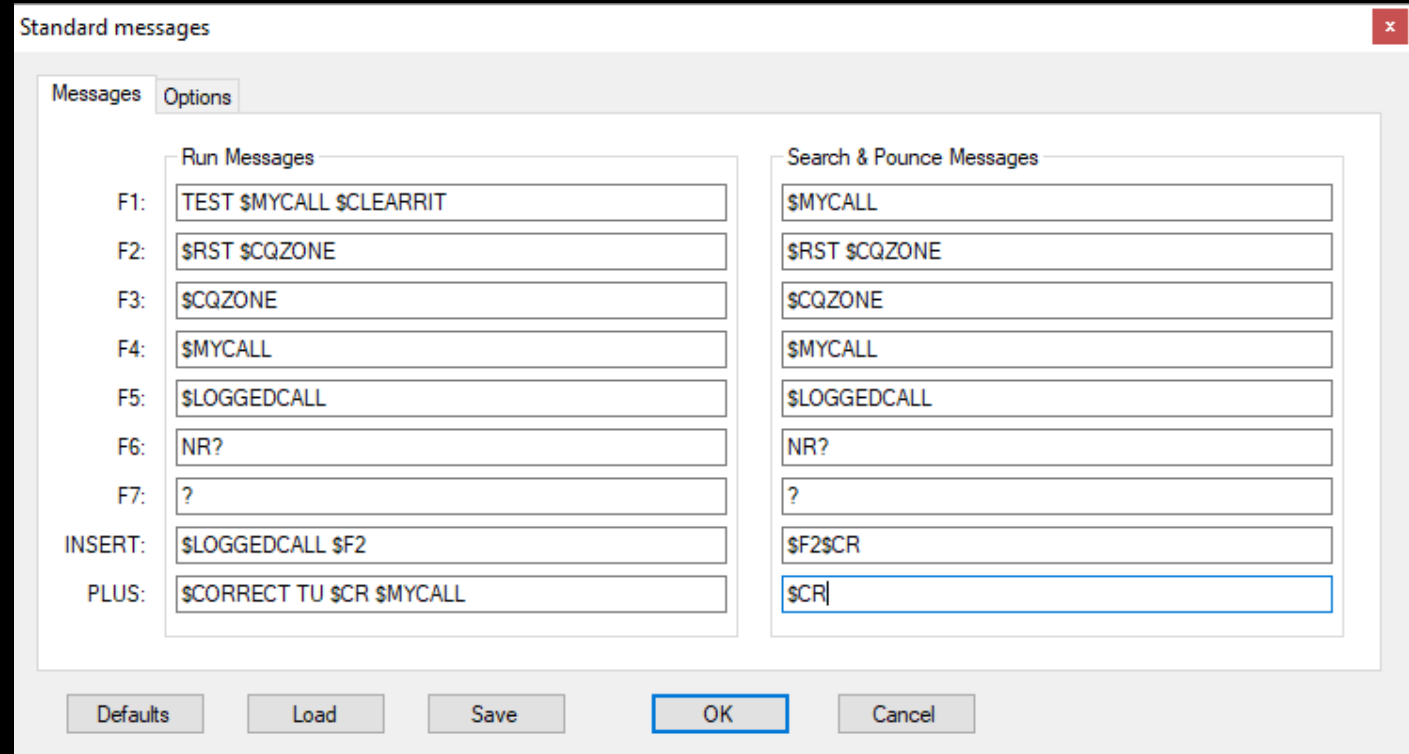
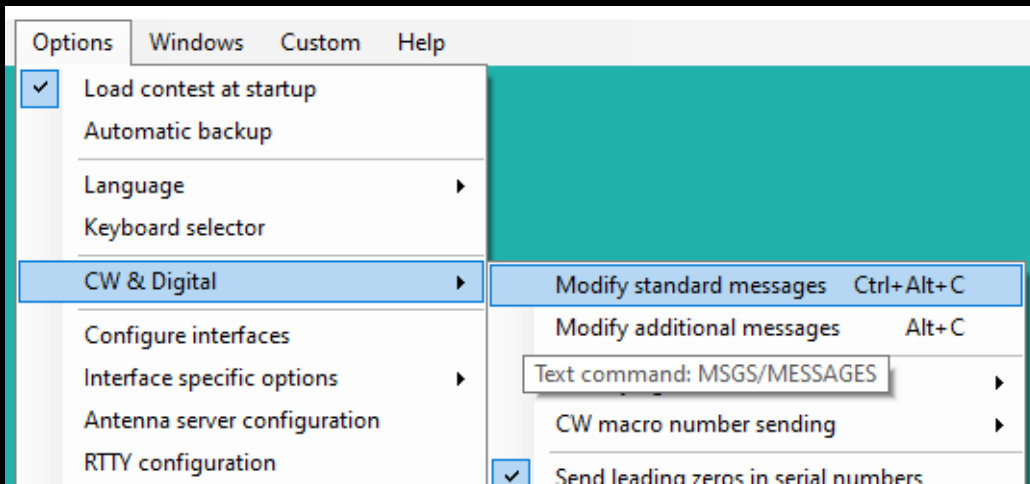
S02R

60	80	CW	16:38	AD81		599	599	05	3	R1
<i>LA8PV 5NN 14</i>										
61	80	CW	16:39	LA8PV		599	599	14	0	R1
<i>LZ5R 5NN 14</i>										
61	80	CW	16:39	LZ5R		599	599	15	0	R2
<b>MULT NEEDED: 160,40,20,15,10</b>										

# Koppla in radion

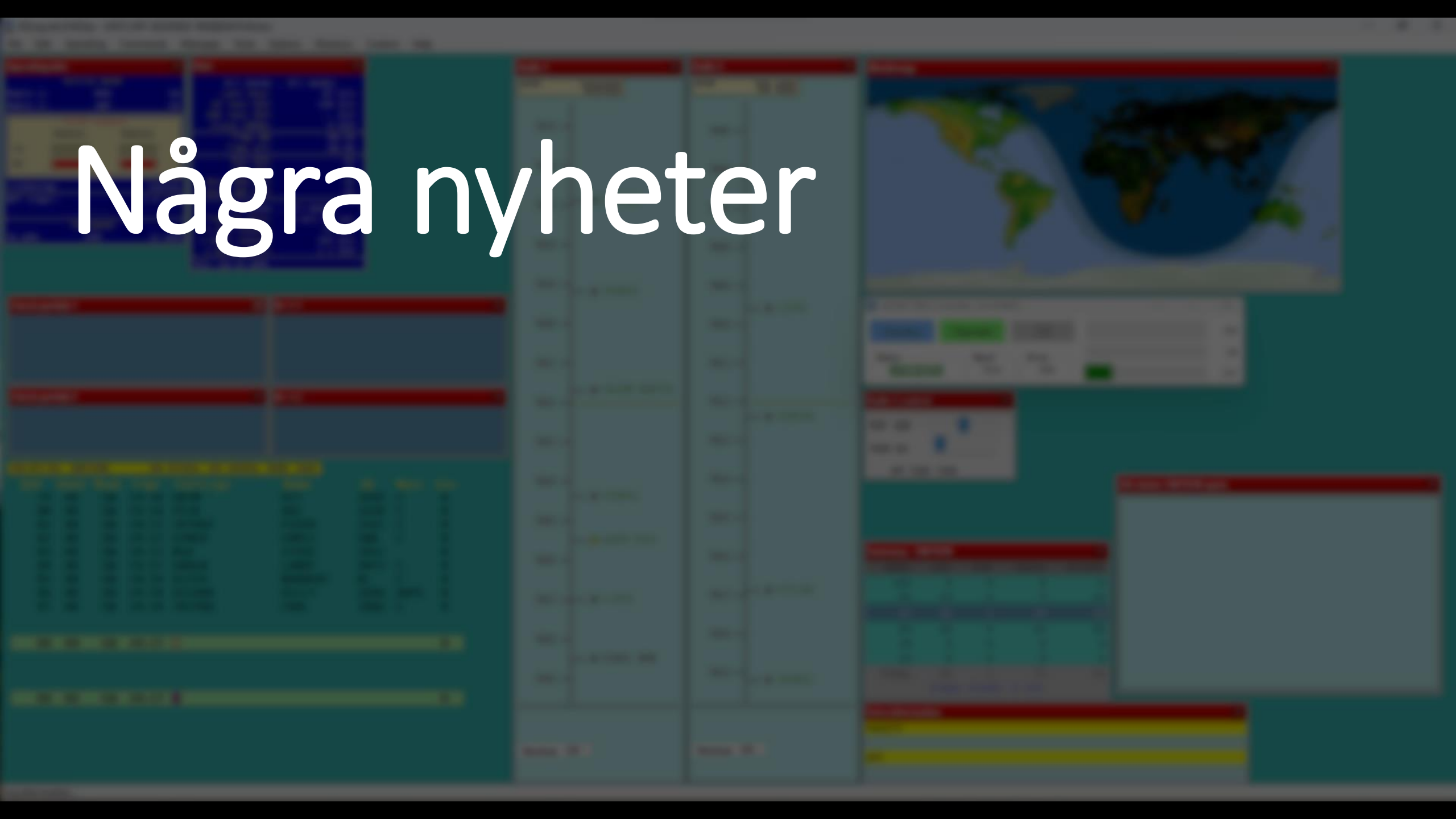


# Justera standardmeddelande



```
9 160 CW 13:41 LA4MM 599 599
10 160 CW 13:41 SE5E 599 599 INGO
11 160 CW 13:41 MSGS 599 599
```

# Några nyheter





# Spektrumvisning

Radio settings

Radio configuration

Radio	Speed	Bits	Parity	Stop
Elecraft K4	38400	8	N	1

Use radio's internal voice keyer ICOM CI-V address (hex)

Use CAT PTT command on Phone and Digital

Use CAT PTT command on CW

Use ICOM CI-V "Transceive" mode (no polling)

Control FlexRadio DAX on Phone

Reinitialize port after switching from TX to RX

Do not poll radio during TX

Use radio DATA mode for voice keyer playback

Always use radio DATA mode for any DIGI mode

Use transverter offsets

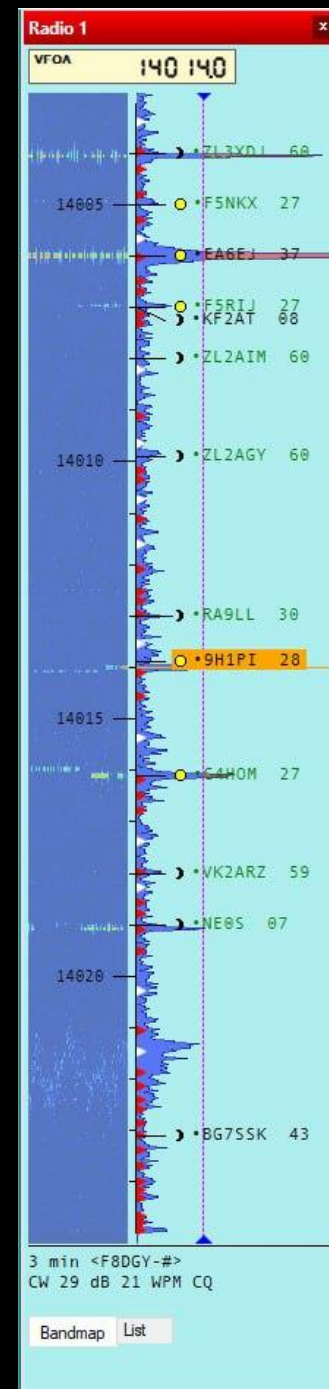
Spectrum

Elecraft K4

Keying & Control

DTR (pin 4)	RTS (pin 7)	DSR/Footswitch (pin 6)
PTT	CW	None
Active with		
Radio 1		

Do not use PTT with voice keyer



Radio 1 spectrum parameters

Waterfall Gain 2.5	Amplitude Gain 4.1
Offset +014	Offset -001
Opacity 128	Opacity 128
	Decay 2

Device: \*\*\*  
Rate:

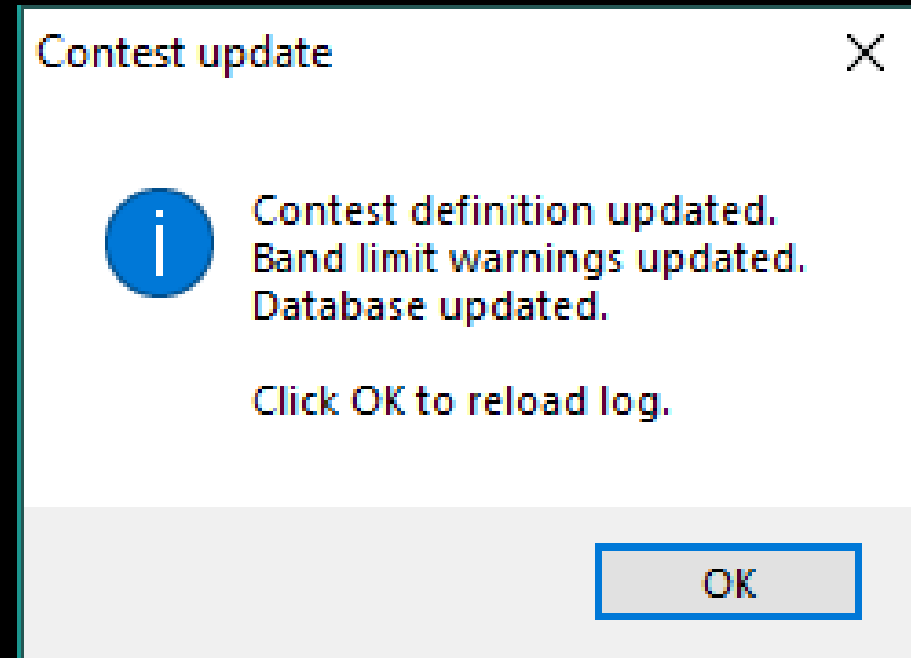
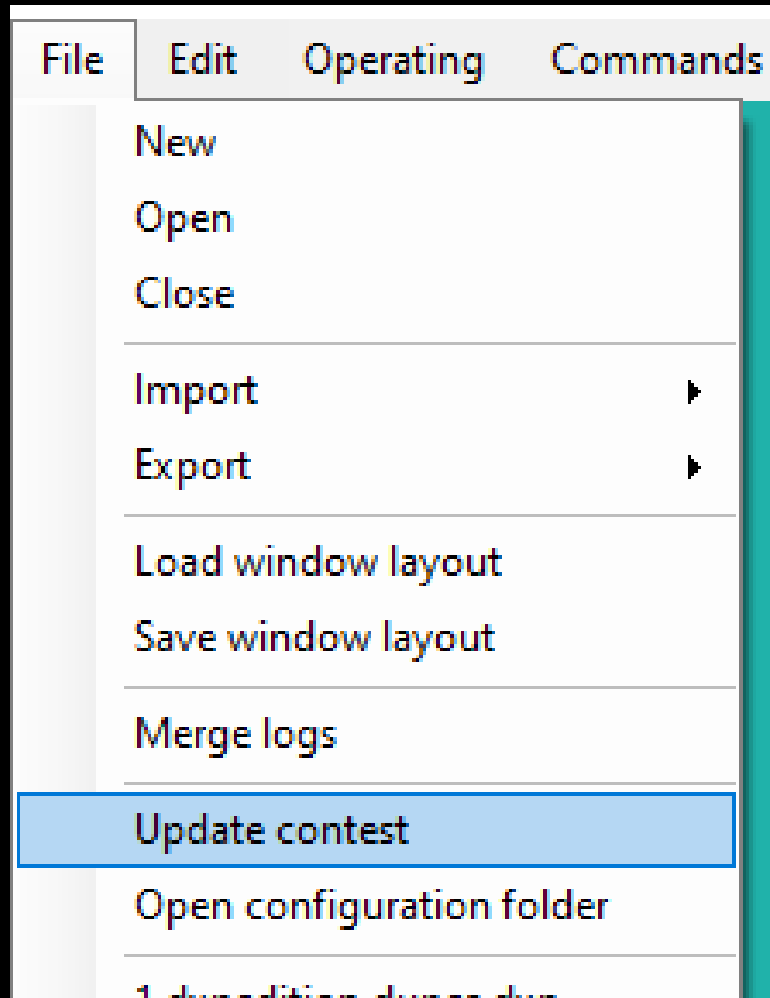
# Egna spottar



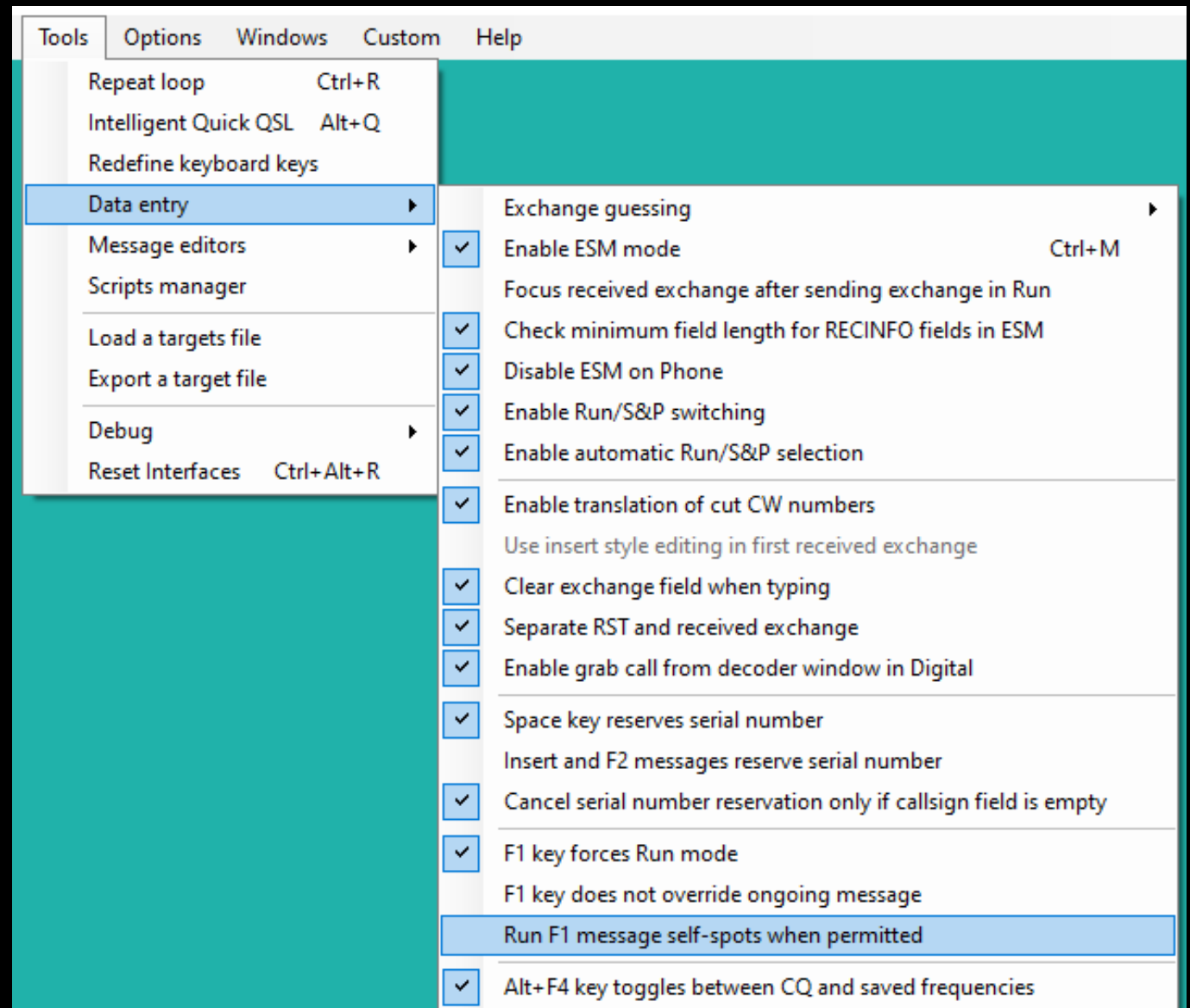
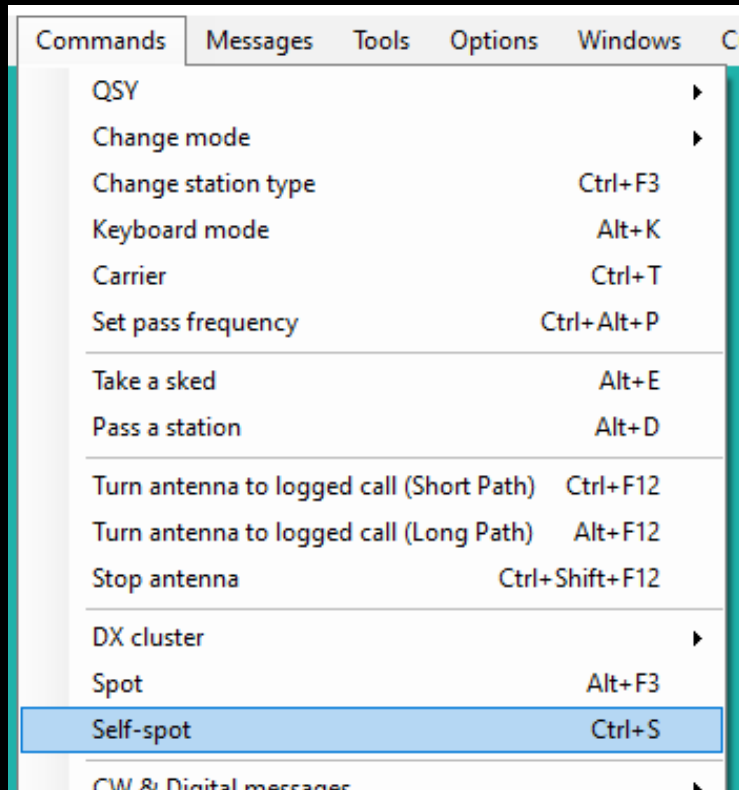
## DX cluster SM7IUN spots

2m	14034.6	VR2FUN...	CW	15	dB	37	WPM	CQ
2m	14034.5	BD8CS-#	CW	9	dB	37	WPM	CQ
2m	14034.6	RU9CZD-#	CW	37	dB	37	WPM	CQ
2m	14034.6	LZ4UX-#	CW	15	dB	37	WPM	CQ
2m	14034.6	F4EGZ-#	CW	23	dB	37	WPM	CQ
2m	14034.6	F4VVG-#	CW	14	dB	37	WPM	CQ
2m	14034.6	F6IIT-#	CW	15	dB	37	WPM	CQ
2m	14034.6	IK4VET-#	CW	28	dB	38	WPM	CQ
2m	14034.6	UY2RA-#	CW	27	dB	37	WPM	CQ
2m	14034.6	MW0MUT-#	CW	28	dB	35	WPM	CQ
2m	14034.6	IK3STG-#	CW	10	dB	36	WPM	CQ
2m	14034.6	HA8TKS-#	CW	24	dB	37	WPM	CQ
2m	14034.6	HG8A-#	CW	38	dB	37	WPM	CQ
2m	14034.5	HB9DC0-#	CW	30	dB	38	WPM	CQ
2m	14034.6	MM3NDH-#	CW	29	dB	35	WPM	CQ
2m	14034.6	G4ZFE-#	CW	22	dB	35	WPM	CQ
2m	14034.6	G0KTN-#	CW	26	dB	37	WPM	CQ
2m	14034.6	G4YBU-#	CW	31	dB	38	WPM	CQ
2m	14034.6	HA2NA-5-#	CW	33	dB	36	WPM	CQ
2m	14034.6	OE9GHV-#	CW	29	dB	38	WPM	CQ
2m	14034.6	R1LB-#	CW	13	dB	37	WPM	CQ
2m	14034.6	OE6TZE-#	CW	15	dB	37	WPM	CQ
2m	14034.6	HA1VHF-#	CW	10	dB	36	WPM	CQ
2m	14034.5	ON6ZQ-#	CW	31	dB	38	WPM	CQ
2m	14034.6	OK4QRO-#	CW	36	dB	38	WPM	CQ
2m	14034.6	PE5TT-#	CW	32	dB	38	WPM	CQ
2m	14034.6	DE1LON-#	CW	30	dB	37	WPM	CQ

# Online-uppdatering av tester

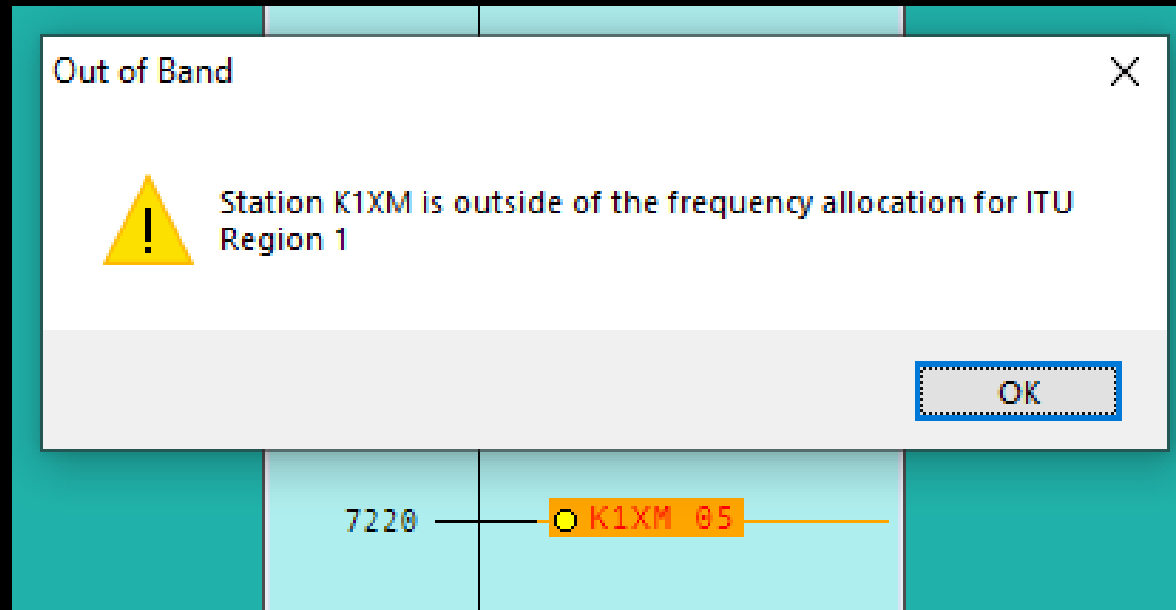


# Självspottning

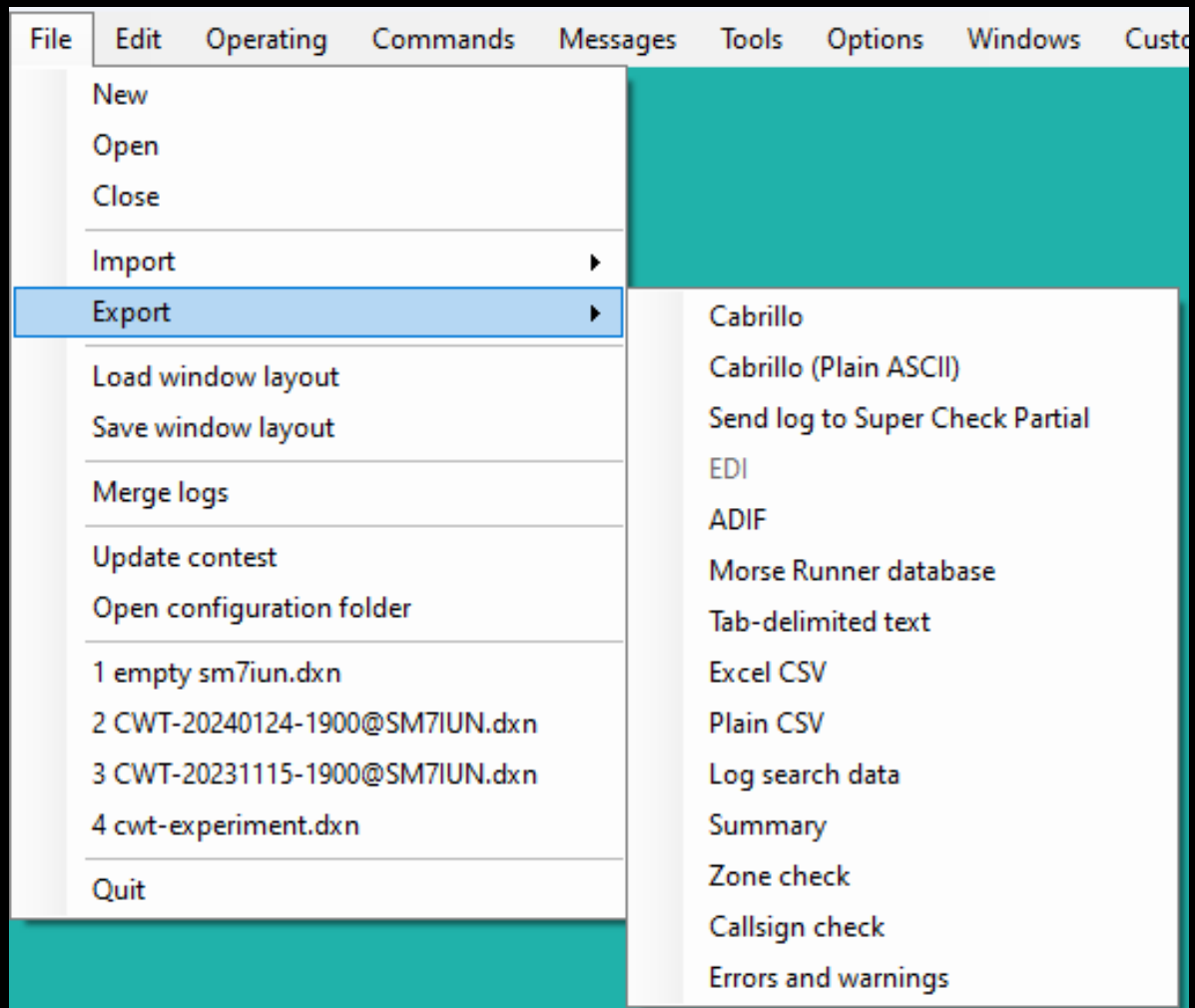


\$\$POTME

# Varning när du plockar en spot utanför tillåtet bandsegment



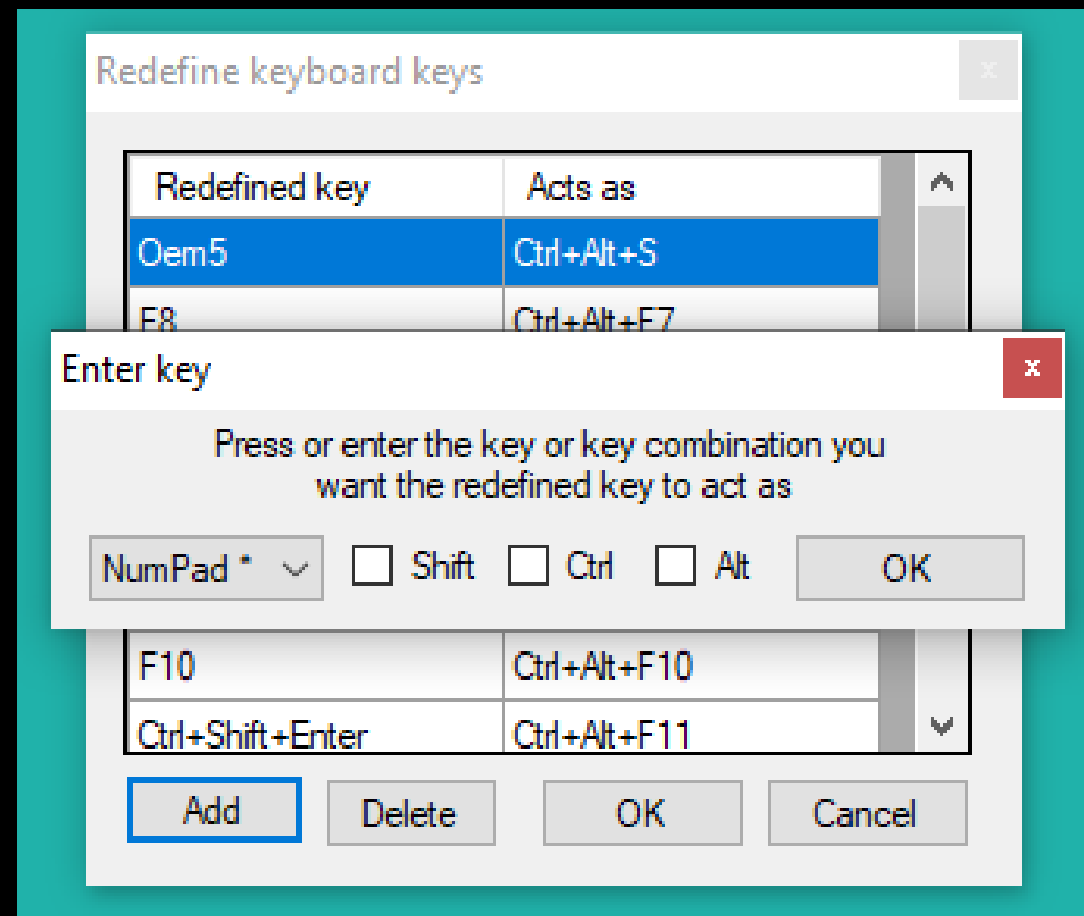
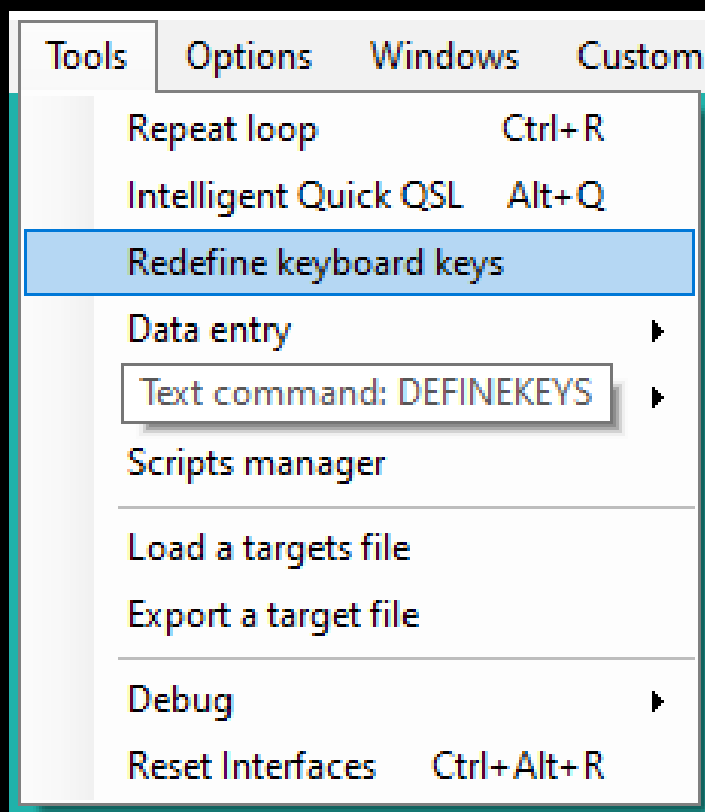
# Nya export- och kontrollalternativ



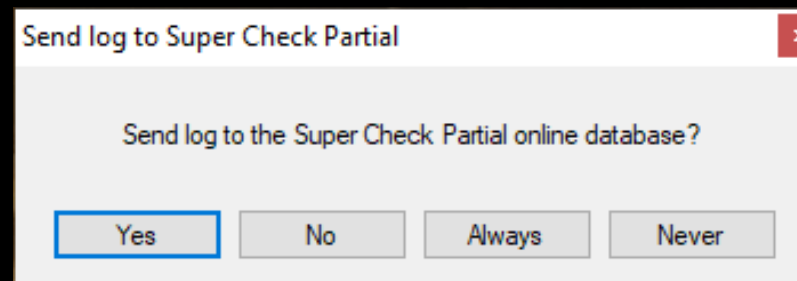
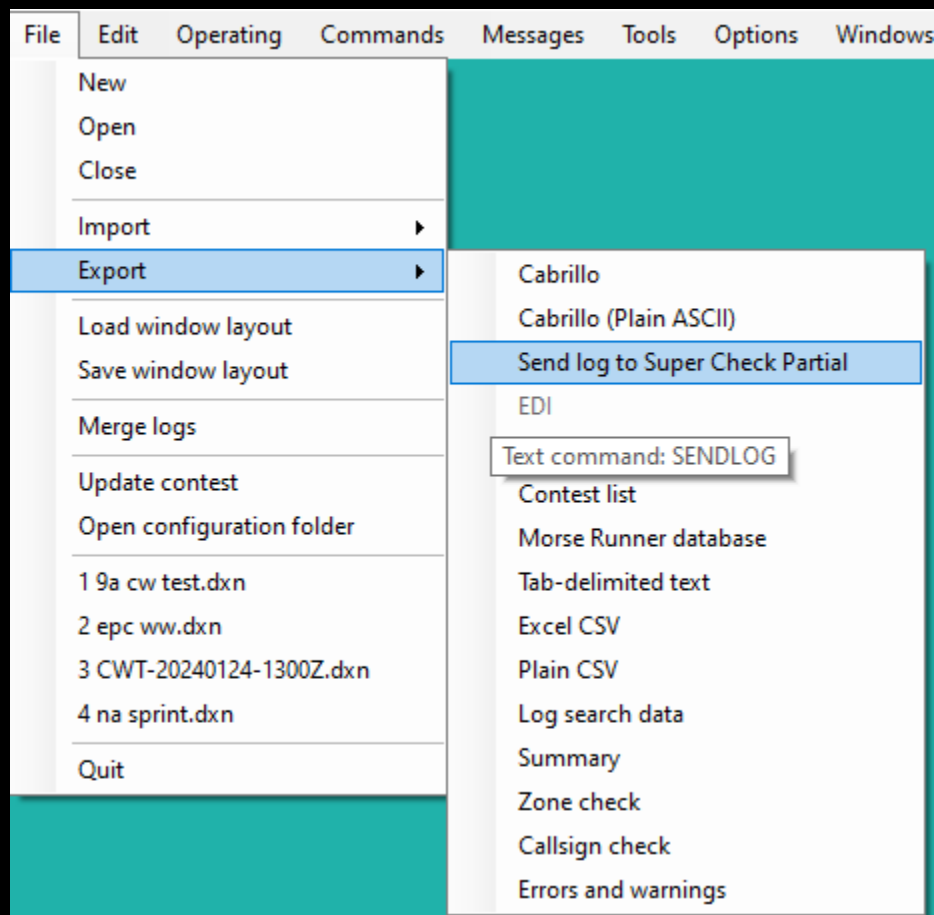
- Cabrillo med åöö (UTF8)
- Excel CSV
- Zone check
- Callsign check
- Errors and warnings



# Kom åt tangenter du inte har



# Bidra automatiskt till Super Check Partial



The image shows a screenshot of the Super Check Partial website. The page has a dark blue header with the text 'Super Check Partial' in green. Below the header is a navigation menu with 'Home' and 'Release History' options. The main content area is titled 'Super Check Partial Database Files for Amateur Radio Contesting' and contains several sections: 'About SCP', 'How to Download', and 'Master Files (February 2, 2024)'. The 'About SCP' section explains the purpose of the database and provides contact information. The 'How to Download' section provides instructions on how to download the files. The 'Master Files (February 2, 2024)' section lists the files available for download.

File Name	Description	Calls	Size
<a href="#">SCP_VER20240202.zip</a>	All master files below contained in one zip file.		1,830 Kb

# Bättre hantering av standardmeddelande

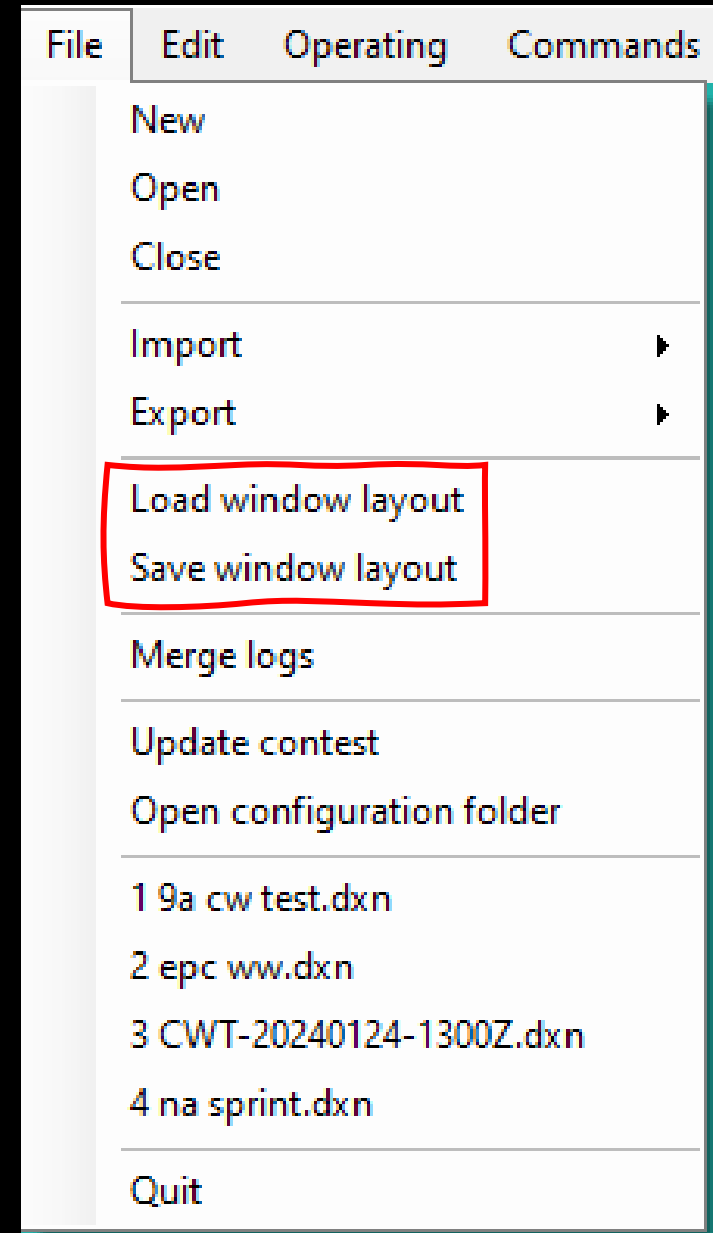
Standard messages x

Messages Options

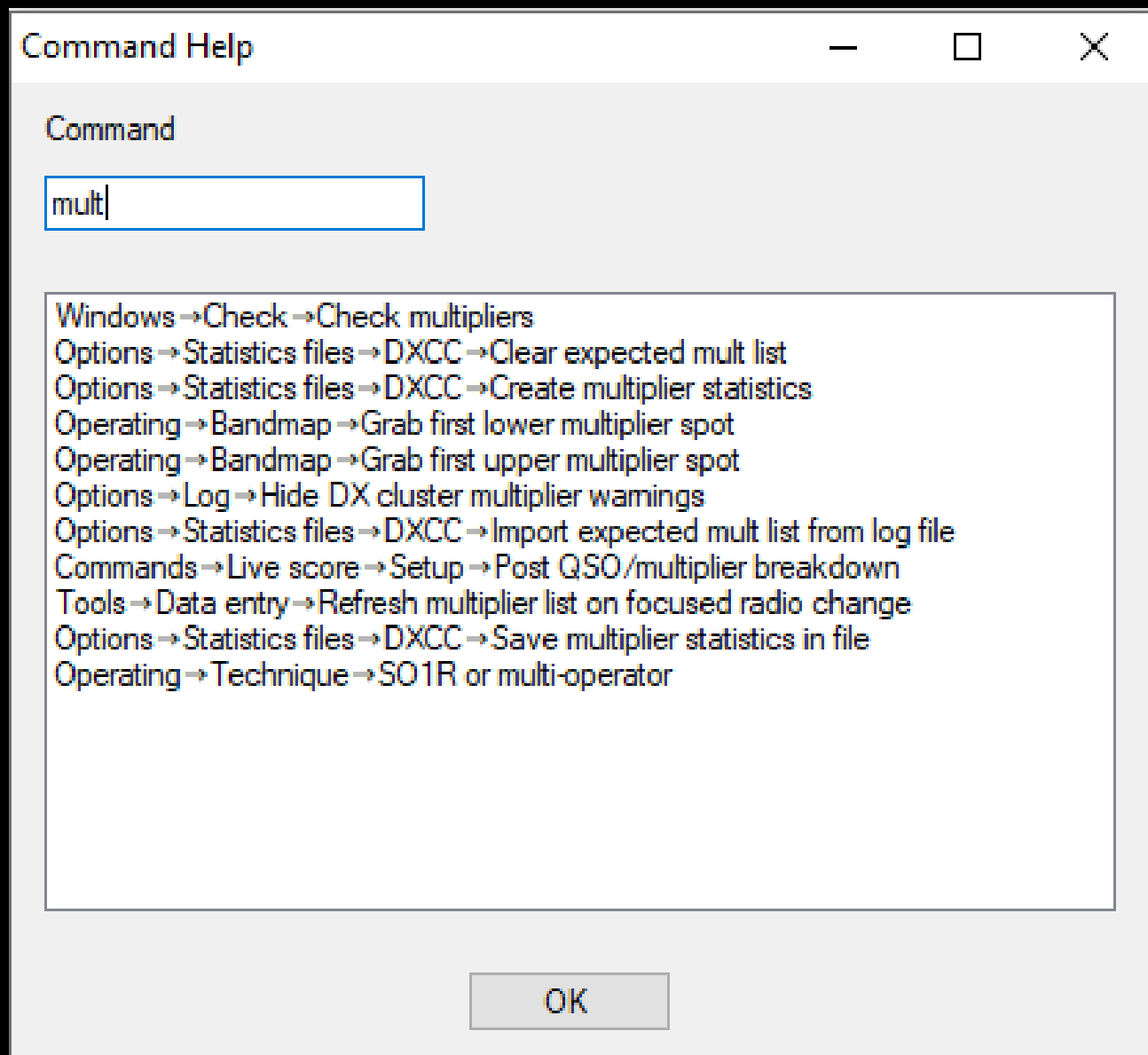
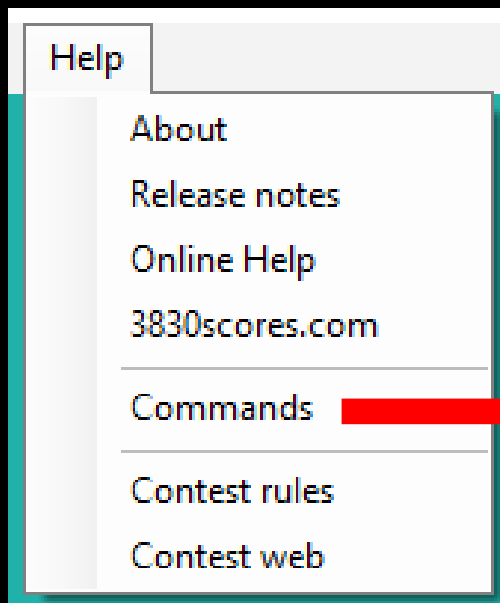
Run Messages		Search & Pounce Messages	
F1:	CQ \$MYCALL \$MYCALL TEST		\$MYCALL
F2:	\$RST \$SERIAL		\$RST \$SERIAL
F3:	\$SERIALNOAB		\$SERIALNOAB
F4:	\$MYCALL		\$MYCALL
F5:	\$LOGGEDCALL		\$LOGGEDCALL
F6:	NR?		NR?
F7:	?		?
INSERT:	\$LOGGEDCALL \$F2		\$F2\$CR
PLUS:	\$CORRECT TU \$CR \$MYCALL		\$CR

Defaults Load Save OK Cancel

# Spara och hämta layout



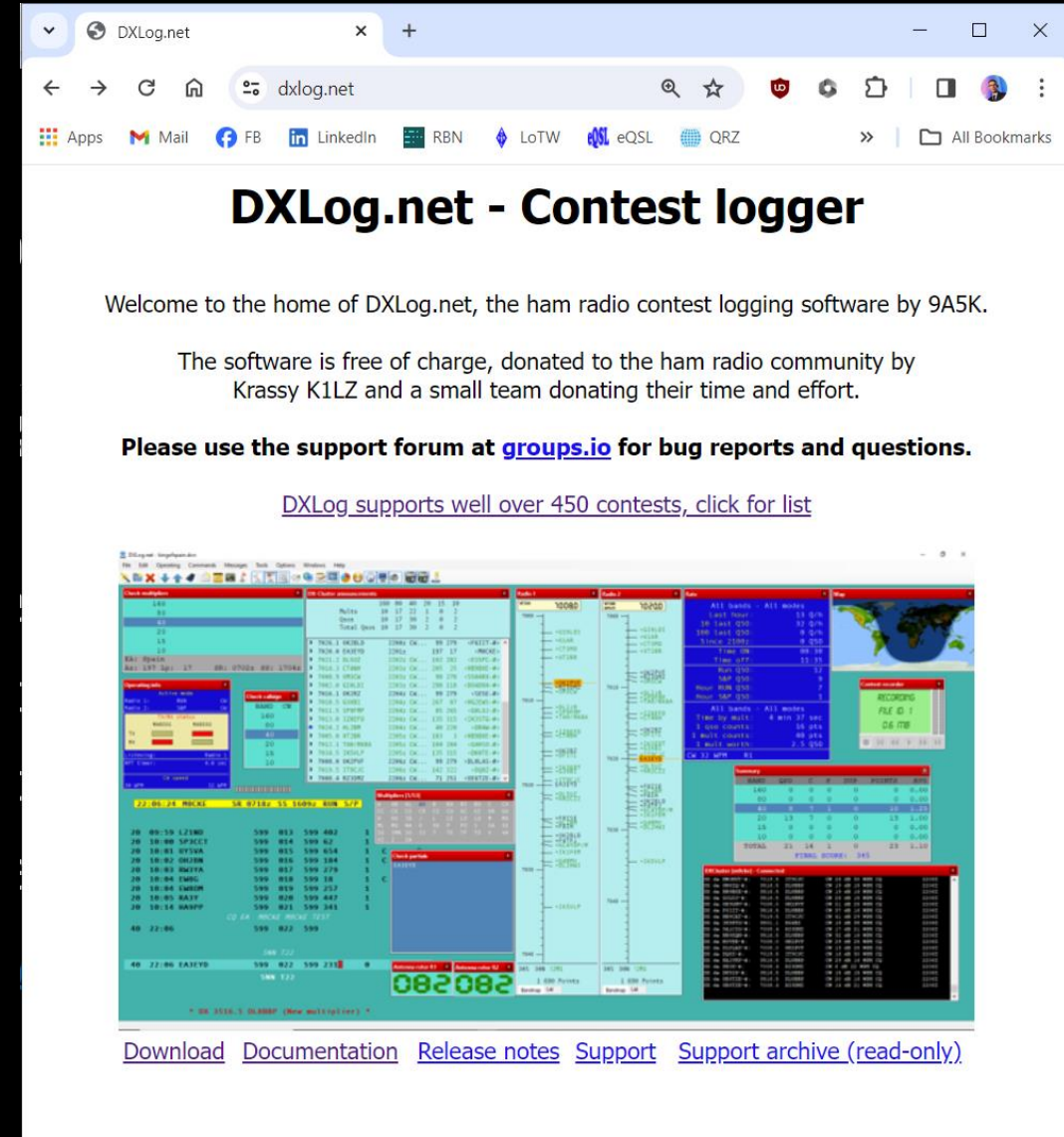
# Bättre hjälp





# DXLog

- Ett loggprogram för contest
- Gratis
- Ständiga förbättringar
- Över 450 tester
- Lätt att komma igång
- Omfattande dokumentation
- Onlineforum för support
- <https://dxlog.net>



The image shows a screenshot of a web browser displaying the DXLog.net website. The browser's address bar shows "dxlog.net". The website header reads "DXLog.net - Contest logger". Below the header, there is a welcome message: "Welcome to the home of DXLog.net, the ham radio contest logging software by 9A5K. The software is free of charge, donated to the ham radio community by Krassy K1LZ and a small team donating their time and effort. Please use the support forum at [groups.io](https://groups.io) for bug reports and questions." Below this, there is a link: "DXLog supports well over 450 contests, click for list".

Below the website screenshot is a screenshot of the DXLog software interface. The interface is a complex multi-pane application. It features a central log window with columns for time, frequency, band, mode, and call signs. There are several smaller windows for statistics, a map, and a list of contests. The interface is color-coded and has a professional, data-oriented appearance.

At the bottom of the screenshot, there are links: [Download](#), [Documentation](#), [Release notes](#), [Support](#), and [Support archive \(read-only\)](#).

# Tack

